



**Reclaim downtown as an economically healthy, people friendly place, enhanced by a diversity of businesses and movement of pedestrians, bikes and cars. One step toward this vision is to proactively invest in the infrastructure required for redevelopment, while meeting Redmond's environmental goals by improving the quality of the stormwater runoff to local streams and rivers.**

## Downtown/Redmond Way Stormwater Trunk

The City will construct a large pipe system to convey stormwater runoff from over 250 acres of Downtown Redmond to the Sammamish River. In a subsequent project, a treatment facility will be built near the river outfall to clean the stormwater prior to discharging it to the river. These projects in the Sammamish River basin are part of the City's Regional Stormwater Facilities Plan, a large-scale effort to overhaul the infrastructure that carries and cleans runoff generated in Redmond.

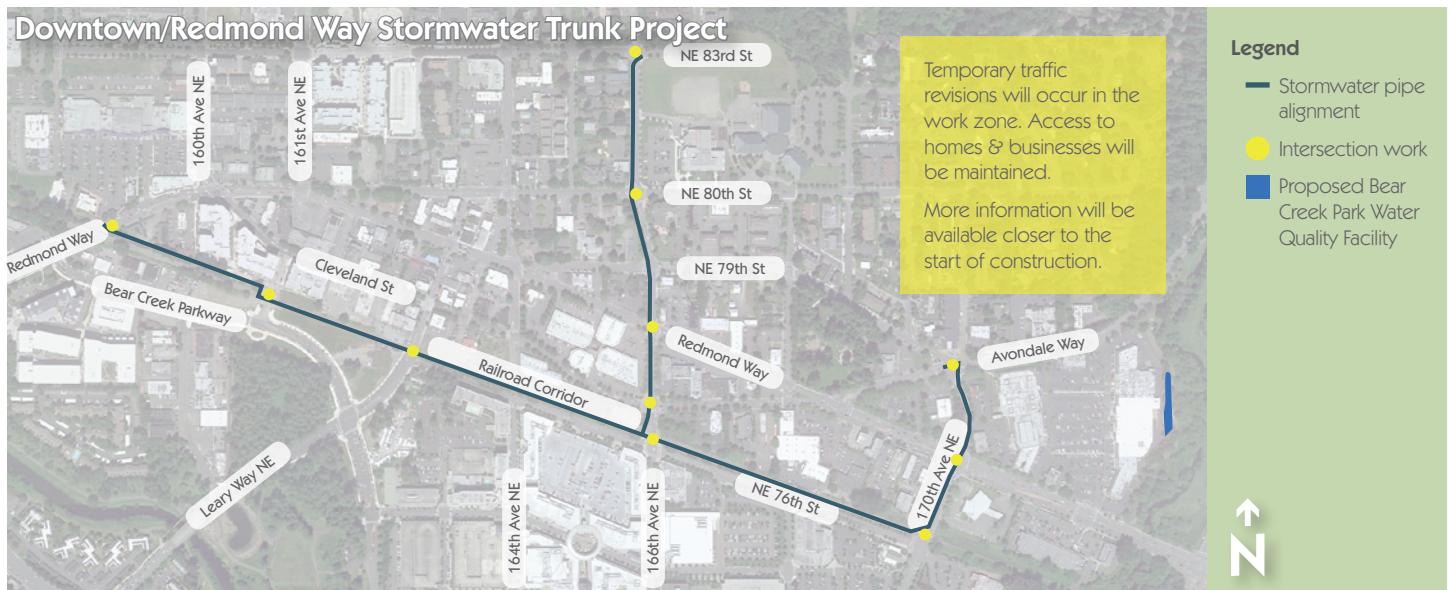
Starting in 2011, crews will begin trenching within the existing railroad corridor, which is the future site of the Redmond Central Connector (project description below). The trench work will extend along the Connector route from Redmond Way east to 170th

Avenue NE. The chosen alignment along the existing railroad corridor reduces impacts to downtown traffic. The pipe line work will also extend north along 166th Avenue NE and 170th Avenue NE.

During construction, temporary traffic revisions will maintain traffic flows through the downtown area. Impacts will be most significant along 166th Avenue NE and 170th Avenue NE during pipeline installation. Interested residents, business owners and travelers can visit [www.redmond.gov](http://www.redmond.gov) for up to date information on project status and traffic impacts.

**PROJECT STATUS:** Pre-Construction

**ESTIMATED CONSTRUCTION:** Summer 2011 – Fall 2012



## Additional Projects

### 161ST AVENUE NE EXTENSION

Construction is currently underway for the extension of 161st Avenue NE from Bear Creek Parkway to Redmond Way. This project is scheduled for completion in the summer of 2011.

### REDMOND CENTRAL CONNECTOR

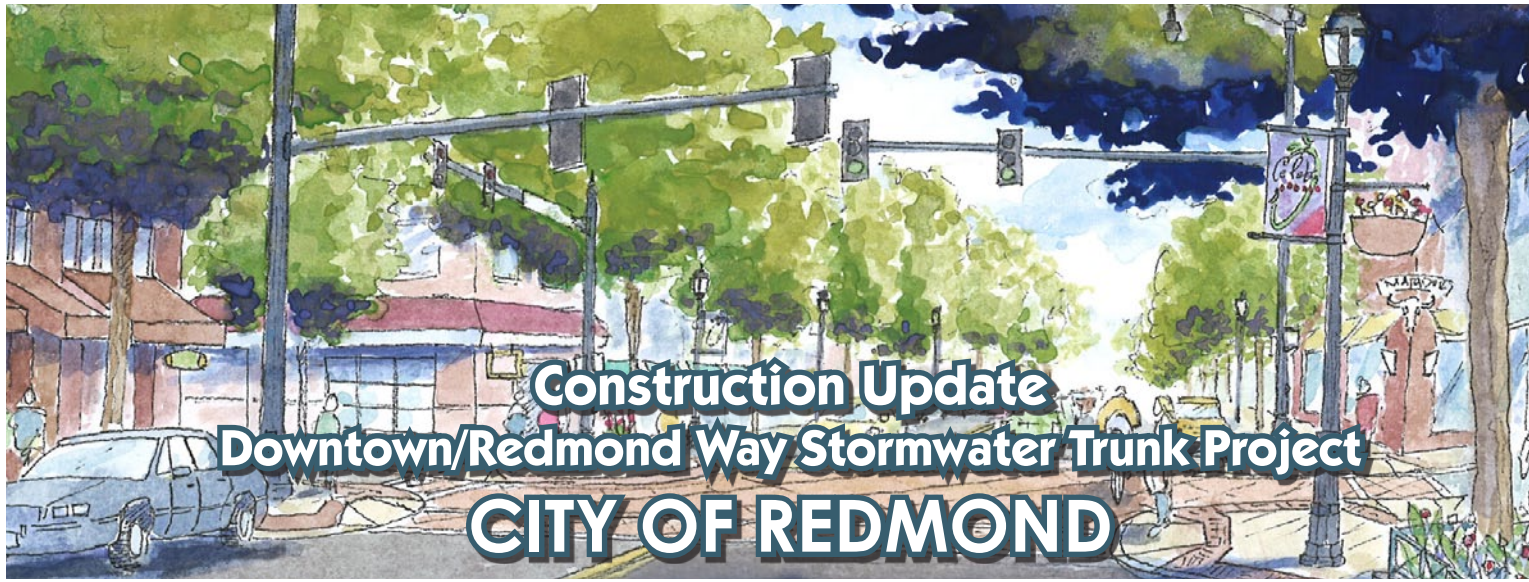
Following completion of the stormwater trunk project, a new park will occupy the existing railroad corridor through Downtown. As part of the park, a trail linking the Sammamish River Trail and the Bear Creek Trail will be constructed. This first phase of work is scheduled to start in 2012. For more information, go to [www.redmond.gov/rcc](http://www.redmond.gov/rcc).

### BEAR CREEK PARK WATER QUALITY FACILITY

Along the Bear Creek Trail, a new stormwater treatment wetland will be constructed in summer 2011. The wetland will be planted with emergent vegetation to aid in the cleaning of existing runoff from the Bear Creek Shopping Center prior to discharging to Bear Creek.

### 164th AVENUE NE EXTENSION

Design work is beginning on the 164th Avenue NE extension across the Connector with construction anticipated to start in 2012.



# Construction Update Downtown/Redmond Way Stormwater Trunk Project CITY OF REDMOND



The City of Redmond  
Construction Division, MS 1NPW  
PO Box 97010  
Redmond, WA 98073-9710

**For Current Project Information visit [www.redmond.gov](http://www.redmond.gov)**  
For Traffic Alerts, visit [www.redmond.gov/transportation](http://www.redmond.gov/transportation)

For Business Comments Related to the Projects

Jim Roberts, Deputy Planning Director  
425-556-2424 • [jroberts@redmond.gov](mailto:jroberts@redmond.gov)

Gary Lee, Senior Planner  
425-556-2418 • [glee@redmond.gov](mailto:glee@redmond.gov)

Mike Haley, Project Manager  
425-556-2843 • [mhaley@redmond.gov](mailto:mhaley@redmond.gov)