

Public Works Department
Division of Natural Resources
May 2009



Vision Statement

*To Preserve, Protect and Enhance
the Land, and Water Resources of
the City of Redmond and Support
Regional Efforts to do the same.*



WHAT WE DO?
BIG PICTURE



- ❖ Stormwater Management
- ❖ Surface-water Planning
- ❖ Surface-water Quality Monitoring
- ❖ Groundwater Protection
- ❖ Habitat Restoration and Conservation
- ❖ Groundwater Conservation
- ❖ Solid Waste Reduction



OUTLINE OF PRESENTATION

- ✓ The Stormwater Problem
- ✓ Receiving Water Body Issues in Your Neighborhood
- ✓ Stormwater Planning- Watershed Level
- ✓ Capital Improvement Projects in Your Neighborhood

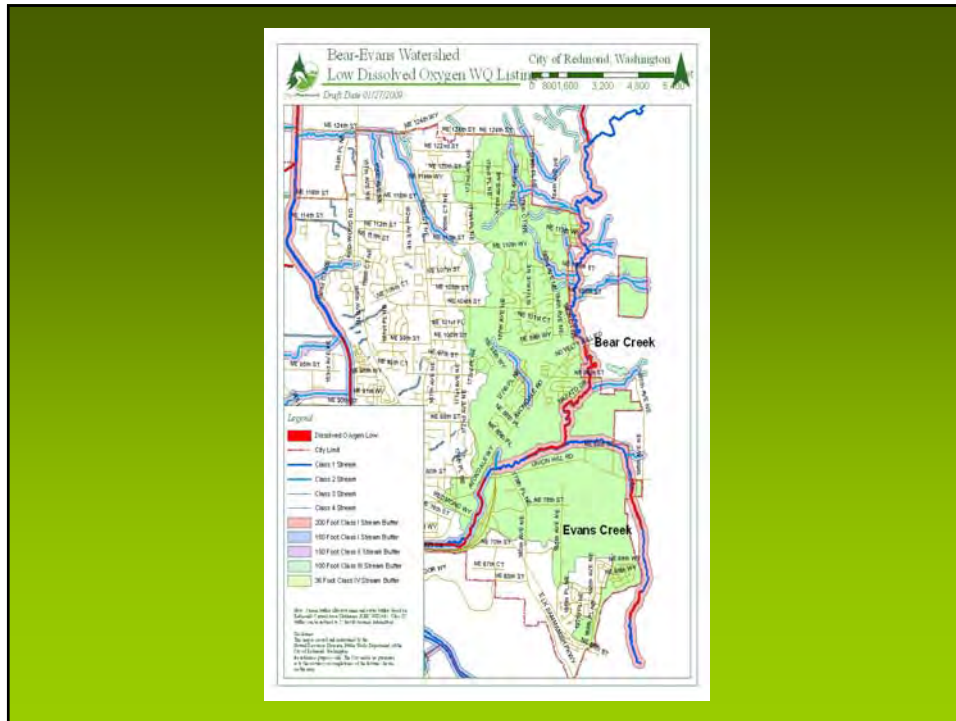


The Stormwater Problem

- Stormwater runoff carries with it **Pollution**
- Stormwater creates **Erosion and Flooding** problems.
- Growth (addition of impervious area) causes these problems to get worst.
- Pollution is caused by all of us
- Stormwater Quality Treatment Facilities
- Pollution Prevention is up to all of us!







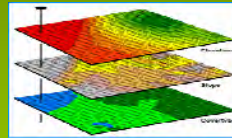
How do we manage the stormwater problem?

- Plan and Construct stormwater systems so contaminants are reduced before they pollute our surface waters and groundwater resources
- Protect and rehabilitate water resources



How do we manage the stormwater problem?

- Revise current stormwater regulations to address our comprehensive stormwater needs
- Enhance and Enforce existing ordinances
- Educate ourselves



What is the Stormwater Utility?

- Stormwater Utility is financed by you, the residents and owners
- The Utility manages the drainage of runoff from the City.



Goals of the Stormwater Utility?



- ❖ Meet or exceed state and federal standards for stormwater management
- ❖ Improve Stormwater impacts on local and regional water resources
- ❖ Build and maintain a stormwater system that protects against flooding.

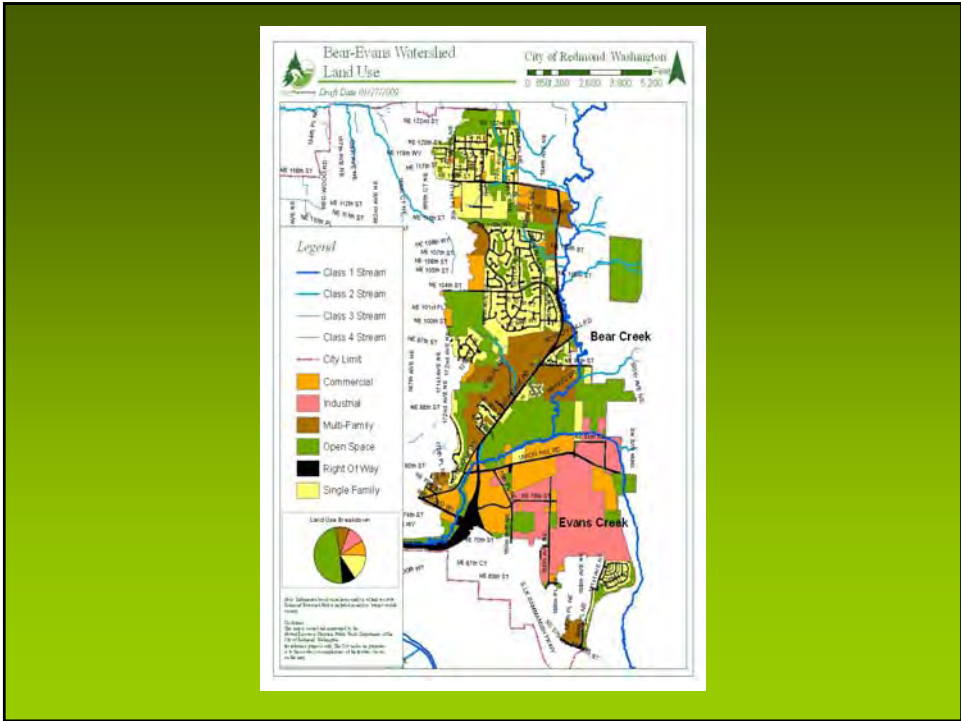


Stormwater Planning The Watershed Approach

Goals of Watershed Planning:

- Polluted Waters Listings
- Stormwater Management Plan
- Salmon Recovery Plan





Stormwater Planning

Regional Stormwater Facilities Plan:

- 13 planned Regional facilities have been identified in the Overlake/Viewpoint neighborhood.
- See Facilities Map



Goal: Meet regulatory needs and improve stormwater across the City!



Capital Improvement Projects

Typical CIP projects:

- ❖ large stream or habitat protection or improvement projects, fisheries enhancement projects,
- ❖ stream bank stabilization or erosion repair projects
- ❖ detention ponds, water quality treatment, and structural upgrades and repairs

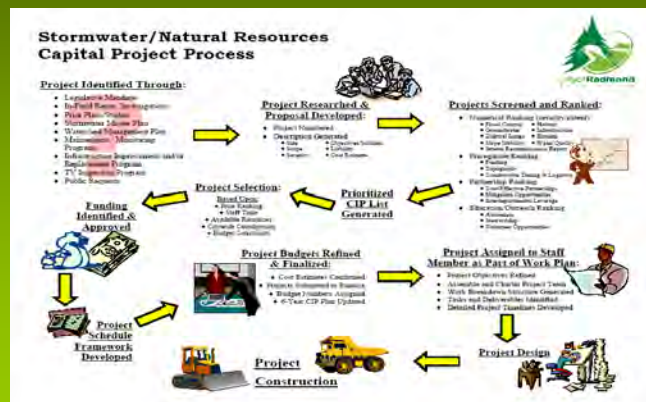


How projects are prioritized to be constructed?

- Ranking based on Total Score
- Score assigned based on extent of problem using a fifteen point matrix of parameters.
- Parameters: Extent and Severity of the problem, the potential for property damage or public safety concerns, and water quality impacts

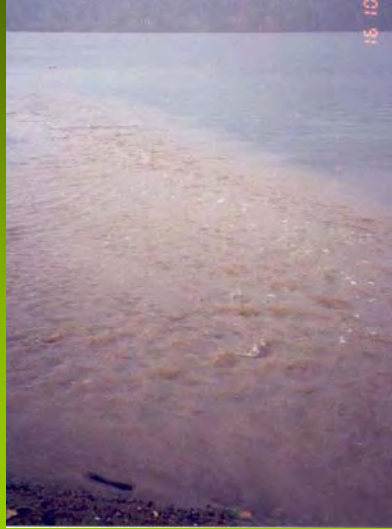


How do projects get built?





QUESTIONS?



QUESTIONS?

